

**COUNTY OF LOS ANGELES**

**ROAD DEPARTMENT**



**NORWALK QUAD**

**BENCH MARKS**

**1960**

## PREFACE

The Road Department level net is composed of more than 1,000 miles of levels supporting in excess of 10,000 bench marks. In 1964-65, a major readjustment of the net was undertaken. To emphasize the complete break with previous elevations, the SY, SG & SL series bench marks have been re-labeled BY, BG & BL, respectively.

To facilitate the adjustment, indexing, and distribution of adjusted values of the net, the County territory was divided into 31 quads or areas. For identification purposes each quad was given a name, viz., "Rosemead," "La Mirada," "Santa Fe," etc. When bench marks and elevations in the Road Department net are used, the name of the quad in which the bench mark is located and the date of the adjustment of the elevation must be included in the bench mark description, e.g.,

BG 1887 --L+BN IN CONC HDWL OF DRAIN PIPE UNDER DR 218 FT  
NE +18 FT SE C/L INT SAN JOSE HILLS RD +CAMERON AVE MKD (BM)  
( COVINA --1965) ELEV. 696.238

It is expected that this general adjustment will, for the most part, remain sound for the next 8 to 12 years. As new circuits are completed, however, re-adjustment of individual quads may become advisable. It is expected that these subsequent adjustments will be in the nature of a few hundredths of a foot. When a quad is re-adjusted, new elevation lists will be published and the date of the re-adjustment will replace the "1965" at the end of the bench mark description. Two bench marks in the same quad with different adjustment dates will not normally join each other. Since all adjustments taper out to nothing at the periphery of the quad, any bench mark in one quad will join any bench mark in another quad regardless of their respective adjustment dates.

The basic accuracy of the net is reflected by an indicated field probable error of plus or minus 0.012 foot per mile of leveling as determined from 298 conditions of closure. However, many years experience in vertical control in the greater Los Angeles basin and Antelope Valley indicate that because of varying degrees of subsidence and heaving, the true datum is recovered only by obtaining substantial agreement of a number of bench marks.

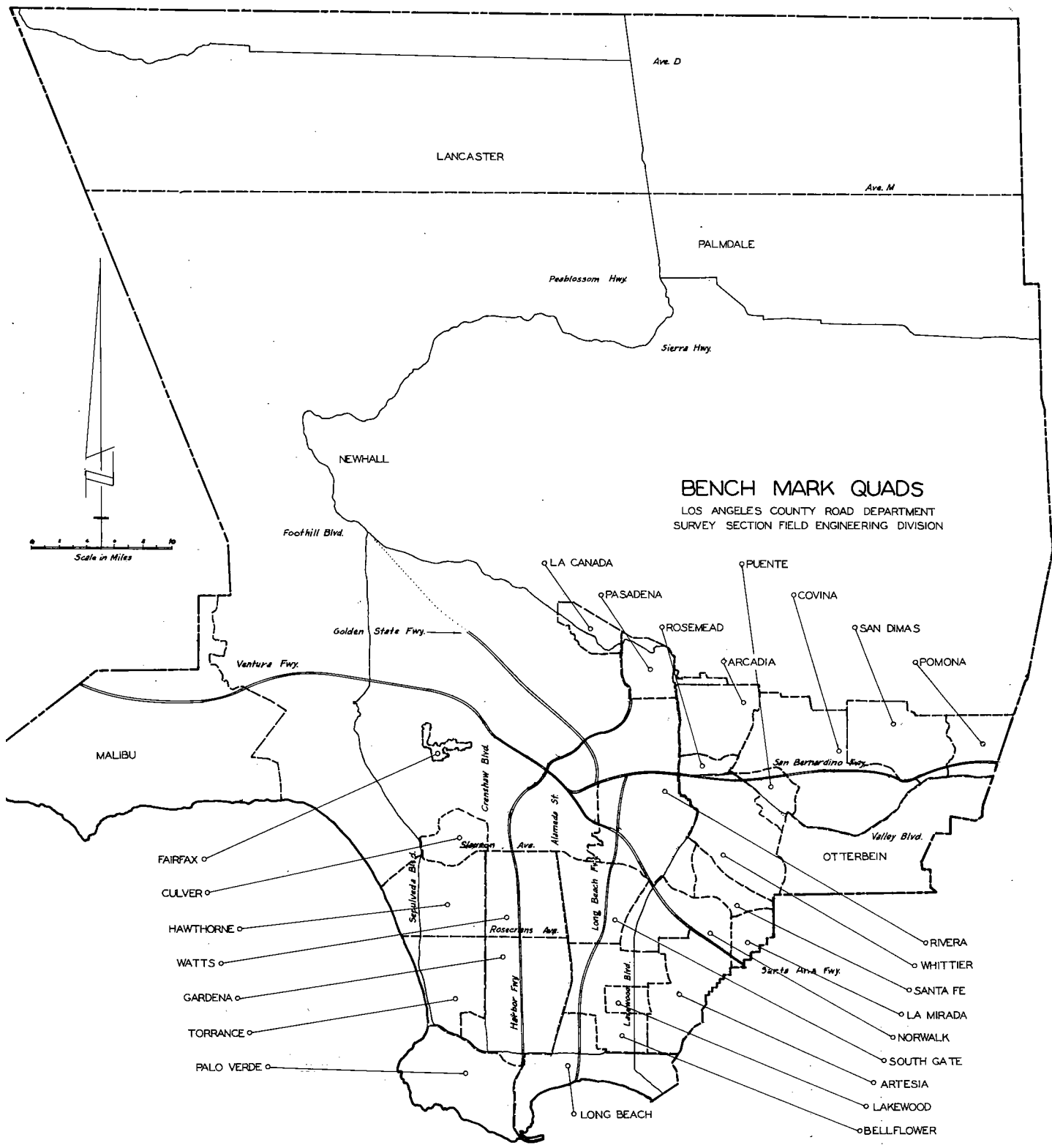
The users of this net are invited to assist in its maintenance by notifying this Department of cases of obliteration, apparent mistakes in descriptions or elevations, and proven disturbance of bench marks.

---

DATUM: U. S. Coast and Geodetic Survey Sea Level Datum  
of 1929, through the medium of the Los Angeles  
County Engineer Precise Level Net, 1963 Adjust-  
ment.

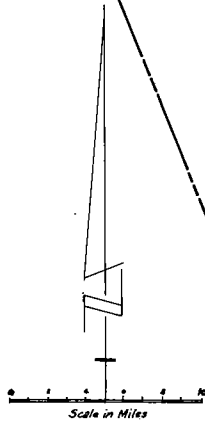
## Abbreviations Used in Bench Mark Listings

ABUT--Abutment	L+BN--Lead and Bench Mark Nail
ANG PT--Angle Point	L+BR--Lead and Brad
BC--Beginning of Curve	L+N--Lead and Nail
BCR--Beginning of Curb Return	L+PK--Lead and PK Nail
BLDG--Building	L+SPK--Lead and Spike
BT SPK--Boat or Bolt Spike	L+T--Lead and Tack
CB RET--Curb Return	MCR--Middle of Curb Return
C/L INT--Center Line Intersection	MKD--Marked
C/L PROD--Center Line Produced	NR--Near
COE--Corps of Engineers	OPP--Opposite
CONC--Concrete	PI--Point of Intersection
CS MON--County Surveyor Monument	PK+W--PK Nail and Washer
CS BR CAP--County Surveyor Brass Cap Monument	P/L--Property Line
CT SPK--Cut Spike	P O S T--Point on Semi-tangent
CTR--Center	PP--Power Pole
DN--Down	PVMT--Pavement
DR--Driveway	R D--Road Department
EC--End of Curve	RDBM--Road Department Bench Mark
ENT--Entrance	RR--Railroad
FC--Flood Control (Dept. LA County)	SPK T+W--Spike, Tin and Washer
FTG--Footing	USC+GS--United States Coast and Geodetic Survey
HDWL--Headwall	USGS--United States Geological Survey
HSE--House	WK--Walk
IP--Iron Pipe	±--Plus or Minus
LACE--Los Angeles City Engineer	+--And



### BENCH MARK QUADS

LOS ANGELES COUNTY ROAD DEPARTMENT  
SURVEY SECTION FIELD ENGINEERING DIVISION



TO

TELEGRAPH RD.

PARAMOUNT BLVD.  
DOWNEY AVE.

LAKELWOOD BLVD.

WOODRUFF AVE.

STUDEBAKER RD.  
ORR & DAY RD.

PIONEER BLVD.

TO SOUTH GATE QUAD

FLORENCE AVE.  
CHEROKEE DR.

FIRESTONE BLVD.

ALAMEDA ST.

IMPERIAL HWY.

GARDENDALE ST.

ROSECRANS AVE.

COMPTON BLVD.

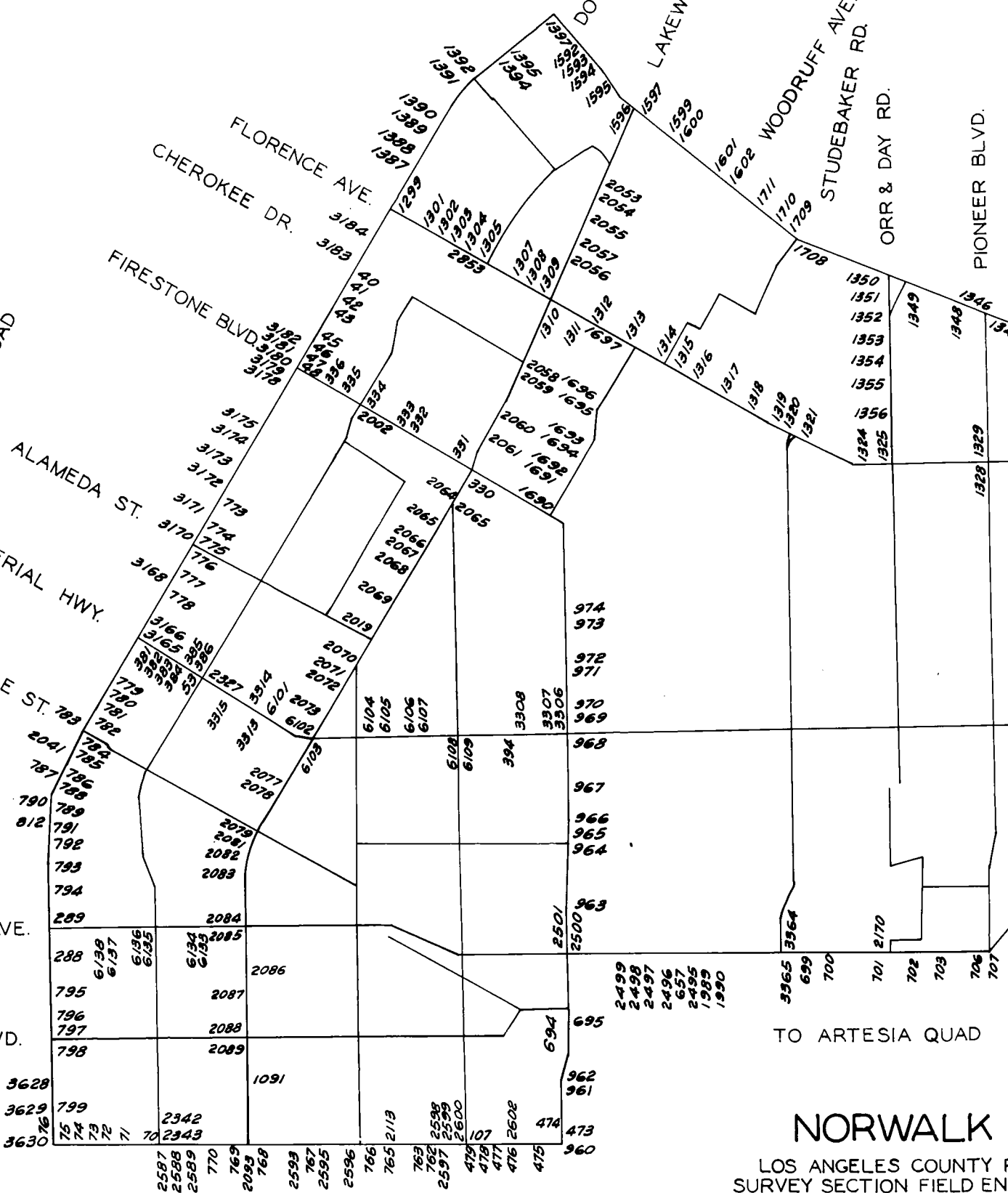
ALONDRA

TO BELLFLOWER QUAD

TO ARTESIA QUAD

# NORWALK

LOS ANGELES COUNTY R  
SURVEY SECTION FIELD ENC



TO RIVERA QUAD

WODRUFF AVE.  
STUDEBAKER RD.  
ORR & DAY RD.

PIONEER BLVD.

NORWALK BLVD.

SCALE - 1 MILE

TO SANTA FE QUAD

CARMENITA AVE.

TO LA MIRADA QUAD

LEFFINGWELL RD.

VALLEY VIEW AVE.

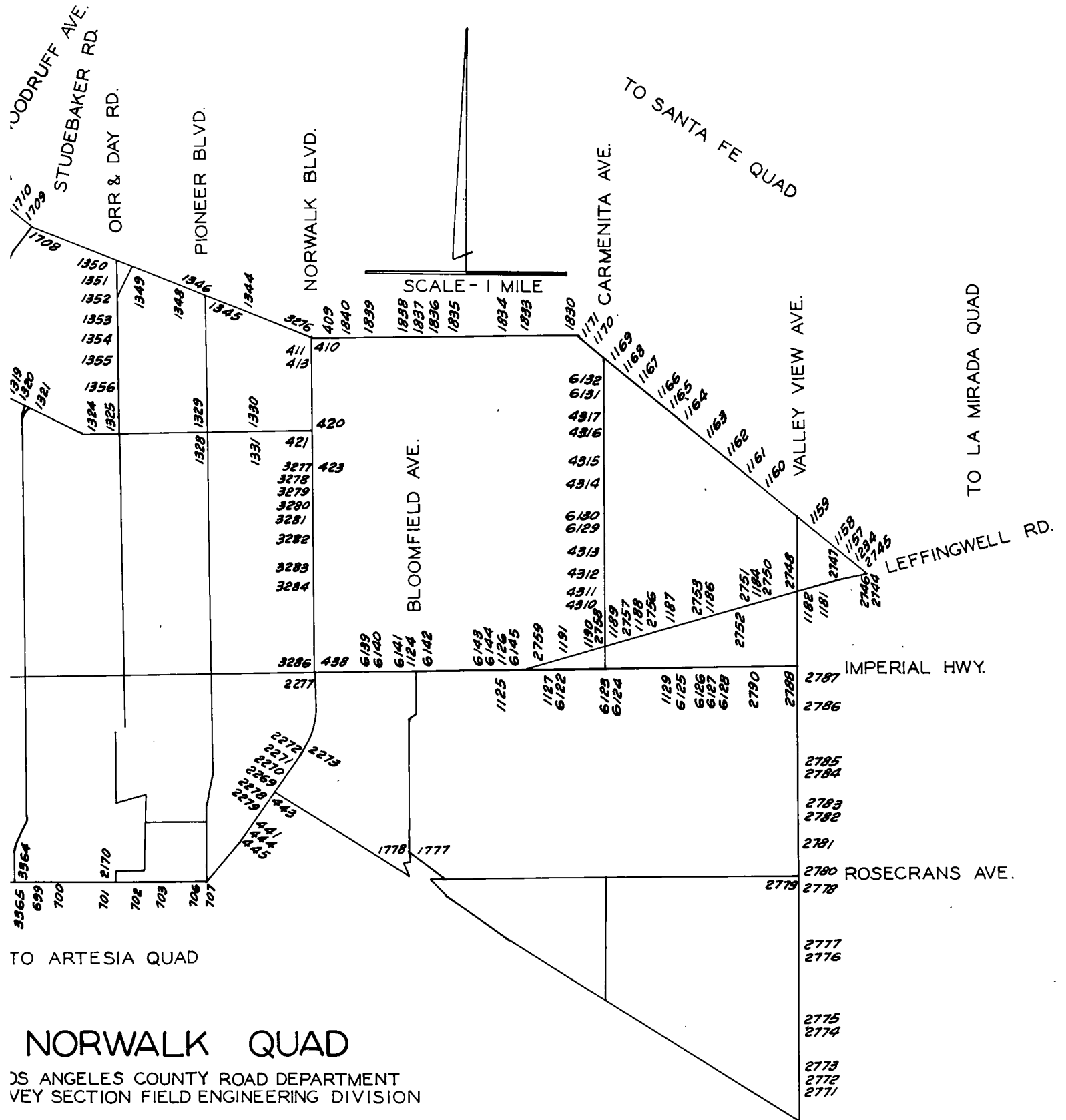
IMPERIAL HWY.

ROSECRANS AVE.

TO ARTESIA QUAD

# NORWALK QUAD

S ANGELES COUNTY ROAD DEPARTMENT  
VEY SECTION FIELD ENGINEERING DIVISION



QUAD-YEAR	ELEV	DESCRIPTION (INCLUDE QUAD AND YEAR IN DESCRIPTION)	BM NUMBER
BASELINE (1955)	122.524	L+BN 17FT# W CB RET SW COR HARPER AVE + PARAMOUNT BLVD	SY 40A
BASELINE (1955)	121.079	L+SPK 5FT# S CB RET SW COR 7TH ST + PARAMOUNT BLVD	SY 41
BASELINE (1955)	118.719	L+SPK 13FT# S CB RET SW COR 6TH ST + PARAMOUNT BLVD	SY 42
BASELINE (1955)	117.993	L+SPK 8FT# N CB RET NW COR 5TH ST + PARAMOUNT BLVD	SY 43
BASELINE (1955)	117.502	L+SPK 12FT# N CB RET NW COR 4TH PL + PARAMOUNT BLVD	SY 45
BASELINE (1955)	116.813	L+SPK 6FT# S CB RET SW COR 3RD ST + PARAMOUNT BLVD	SY 46
BASELINE (1955)	116.473	L+SPK 18FT# N CB RET NW COR 2ND ST + PARAMOUNT BLVD	SY 47
BASELINE (1955)	116.211	L+T CTR CB RET NE COR FIRESTONE BLVD + PARAMOUNT BLVD	SY 48A
NORWALK (1960)	100.783	L+SPK CONC PVMT 1FT# W C/L DOWNEY AVE 9FT# S C/L IMPERIAL HWY	SY 53
BASELINE (1955)	66.674	L+T C/L PVMT ALONDRA BLVD 100FT# W C/L DOWNEY AVE	SY 70A
BASELINE (1955)	67.312	L+T C/L INT INDIANA AVE + ALONDRA BLVD	SY 71A
BASELINE (1955)	67.929	CUT SPK 6FT# N C/L INT VIRGINIA AVE + ALONDRA BLVD	SY 72A
BASELINE (1955)	68.528	BT SPK PVMT 7FT# N C/L INT GEORGIA AVE + ALONDRA BLVD	SY 73
BASELINE (1955)	69.048	SPK PVMT 7FT# N C/L INT CRIZABA AVE + ALONDRA BLVD	SY 74A
BASELINE (1955)	68.779	SPK PVMT 8FT# N C/L INT CALIFORNIA AVE + ALONDRA BLVD	SY 75A
BASELINE (1955)	68.751	L+T IN N CB ALONDRA BLVD 15FT# W OF CB RET @ NW COR ALONDRA BLVD + PARAMOUNT BLVD	SY 76B
BASELINE (1955)	74.665	L+T SW STRADDLER @ C/L INT BELLFLOWER BLVD + CENTER ST	SY 107A
BASELINE (1955)	73.731	4.5 IN IP WITH L+T 6IN BACK WK ON SE COR PARAMOUNT BLVD + ROSECRANS AVE 244FT# S C/L 50FT# E C/L INT MKD (LAC 32)	SY 288A
BASELINE (1955)	77.795	L+BN IN SE COR OF SIGNAL BASE NO 130 ON SE COR ROSECRANS AVE + PARAMOUNT BLVD 41FT# S + 65FT# E C/L INT	SY 289A
NORWALK (1960)	111.563	L+T NR CB RET @ SE COR LAKEWOOD BLVD + FIRESTONE BLVD	SY 330
NORWALK (1960)	111.757	L+T S CB FIRESTONE BLVD 1FT# E CB RET @ NASH AVE	SY 331
NORWALK (1960)	114.831	L+T S CB FIRESTONE BLVD 1FT# E CB RET @ SE COR CHURCH ST	SY 332A
NORWALK (1960)	114.732	L+T S CB FIRESTONE BLVD 1FT# E CB RET @ SE COR DOLAN ST	SY 333A

JUL 1964

LOS ANGELES COUNTY ROAD DEPARTMENT  
SURVEY SECTION FIELD ENGINEERING DIVISION

PAGE 2

QUAD-YEAR	ELEV	DESCRIPTION (INCLUDE QUAD AND YEAR IN DESCRIPTION)	BM NUMBER
NORWALK (1960)	115.611	L+T CTR CB RET @ SW COR FIRESTONE BLVD + DOWNEY AVE	SY 334
NORWALK (1960)	113.458	L+T S CB FIRESTONE BLVD 1FT# E CB RET @ SE COR LA RENA AVE	SY 335
NORWALK (1960)	112.693	L+T CB FIRESTONE BLVD 1 FT# E CB RET @ SE COR MYRTLE ST	SY 336
NORWALK (1960)	96.404	L+BN CB 1FT# E/O ECR @ SE COR IMPERIAL HWY + 1FT# E BCR SERVICE RD	SY 381
NORWALK (1960)	96.753	L+T CB SE COR IMPERIAL HWY + ORIZABA AVE @ BCR SERVICE RD	SY 382
NORWALK (1960)	96.965	L+BN 1FT# E/O ECR @ SE COR IMPERIAL HWY + LA RINA AVE (SERVICE RD)	SY 383
NORWALK (1960)	97.661	L+BN 1FT# E/O ECR @ SE COR IMPERIAL HWY + GNEISS AVE (SERVICE RD)	SY 384
NORWALK (1960)	98.802	L+T CB 1FT# E/O ECR @ SE COR IMPERIAL HWY + GURLEY AVE (SERVICE RD)	SY 385
NORWALK (1960)	100.311	L+T CB RET 2FT# N ECR @ SW COR IMPERIAL HWY + DOWNEY AVE	SY 386
NORWALK (1960)	93.791	CUT SPK PVMT 9FT# N/O C/L IMPERIAL HWY 15FT# W/O C/L DUNROBIN ST	SY 394
BASELINE (1955)	142.433	CUT SPK NW END CONC ISLAND @ SW COR ANAHEIM- TELEGRAPH RD + NORWALK BLVD	SY 409A
BASELINE (1955)	140.867	CS MON @ INT NORWALK BLVD + ANAHEIM-TELEGRAPH RD	SY 410
NORWALK (1960)	137.889	BR CAP IN WELL 1.5FT DN W C/L NORWALK-BLVD @ C/L PROD PARK AVE	SY 411A
NORWALK (1960)	137.543	BR CAP IN WELL 1.5FT DN 40FT# W C/L NORWALK BLVD A C/L PROD GARDENER AVE	SY 413
NORWALK (1960)	<b>OUT</b> 133.430	CUT SPK IN WELL 1.5FT DN 50FT# E C/L NORWALK BLVD 30FT# S C/L FLORENCE AVE	SY 420
NORWALK (1960)	<b>OUT</b> 133.430	COSUR MON IN WELL 4IN DN @ CR NEAR C/L INT NORWALK BLVD + FLORENCE AVE	SY 421A
NORWALK (1960)	<b>OUT</b> 126.937	CUT SPK IN WELL 18 IN DN 50FT# E + 30FT# S C/L INT NORWALK BLVD + MEYERS RD (LAKELAND AVE)	SY 423
NORWALK (1960)	106.906	L+N SE COR WIER BOX 25FT# E C/L NORWALK BLVD 8/FT# S C/L IMPERIAL HWY	SY 438
BASELINE (1955)	94.838	L+T 1FT# N CB RET @ NE COR PINE ST + SAN ANTONIO DR	SY 441
BASELINE (1955)	96.495	L+T 5FT# N CB RET @ NW COR SAN ANTONIO DR + FRONT ST	SY 443A
BASELINE (1955)	93.518	L+T 2FT# E END CF CB @ SE COR WALNUT ST + SAN ANTONIO DR	SY 444A
BASELINE (1955)	93.225	L+T 2FT# E CB RET @ NE COR SYCAMORE ST + SAN ANTONIO DR	SY 445A
BASELINE (1955)	73.510	CS REF MON IN WELL 14IN DN ON NE COR ALCNDRA BLVD + WOODRUFF BLVD 56FT# N + 60FT# E C/L INT MKD (CLEARWATER K 2A)	SY 473A



QUAD-YEAR	ELEV	DESCRIPTION (INCLUDE QUAD AND YEAR IN DESCRIPTION)	BM NUMBER
BASELINE (1955)	74.125	CSBM MON FLUSH ON NE COR ALONDRA BLVD + WOODRUFF AVE 39FT± N + 180FT± W C/L INT MKD (BM 6-6A1958)	SY 474A
BASELINE (1955)	74.844	L+N 80FTS8 S C/L ALONDRA BLVD W CB CORNUTA AVE	SY 475
BASELINE (1955)	75.150	L+N W CB EUCALYPTUS AVE 80FT± S C/L ALONDRA BLVD	SY 476A
BASELINE (1955)	75.083	L+N E CB EUCALYPTUS AVE 80FT± S C/L ALONDRA BLVD	SY 477A
BASELINE (1955)	75.556	L+T E CB LEAHY AVE 80FT± N C/L ALONDRA BLVD	SY 478A
BASELINE (1955)	75.541	L+T W CB LEAHY AVE 80FT± N C/L ALONDRA BLVD	SY 479A
BASELINE (1955)	80.895	RDBM TAG W CB 6FT± S BCR @ SW COR WOODRUFF AVE + WASHINGTON ST 50FT± S + 40FT± W C/L INT	SY 694A
BASELINE (1955)	81.132	RD HD SPK + L W CB 25FT± N BCR @ NW COR WOODRUFF AVE + WASHINGTON ST 70FT± N + 40FT± W C/L INT MKD (BM 26)	SY 695A
BASELINE (1955)	87.876	FC BRONZE DISC @ SW COR DAIRY PLATFORM 75FT± N C/L ROSECRANS AVE 300FT± E SAN GABRIEL RIV BRIDG	SY 697A
BASELINE (1955)	84.708	L+N 1FT± E BCR @ SE COR ROSECRANS AVE + CROSSDALE AVE	SY 699A
BASELINE (1955)	85.015	L+N 1FT± E BCR @ SE COR ROSECRANS AVE + ELMCROFT AVE	SY 700A
BASELINE (1955)	84.518	L+T N CB ROSECRANS AVE 36FT± N C/L + 37FT± W C/L PROD GRIDLEY RD	SY 701B
BASELINE (1955)	85.404	L+N 1FT± E BCR @ SE COR ROSECRANS AVE + GARD AVE	SY 702A
BASELINE (1955)	86.960	L+N 1FT± S BCR @ SE COR ROSECRANS AVE + JERSEY AVE	SY 703A
BASELINE (1955)	86.716	CS MON IN WELL 13IN DN ON NW COR ROSECRANS AVE + PIONEER BLVD 86FT± N + 40FT± W C/L INT MKD (WHITTIER C 124 1959)	SY 706A
BASELINE (1955)	87.258	RDBM MON FLUSH IN CONC SQ POST ON SW COR ROSECRANS AVE + ARLEE AVE 835FT± + 20FT± W C/L INT MKD (BM 184)	SY 707A
BASELINE (1955)	73.092	L+T INT ORCHARD AVE + ALONDRA BLVD	SY 762A
BASELINE (1955)	72.138	L+T 2FT± W CB RET NW COR RYON AVE + ALONDRA BLVD	SY 763A
BASELINE (1955)	74.034	L+BN S CB ALONDRA BLVD 6IN E CB RET @ SE COR ALONDRA BLVD + PACIFIC AVE 70FT± W PERR	SY 765B
BASELINE (1955)	68.914	L + SPK 4FT± E CB RET @ NE COR CLARK AVE + ALONDRA BLVD	SY 766A
BASELINE (1955)	69.941	L+T C/L INT VIRGINIA DR + ALONDRA BLVD	SY 767A
BASELINE (1955)	69.796	L+T C/L INT LAKEWOOD BLVD + ALONDRA BLVD	SY 768

QUAD-YEAR	ELEV	DESCRIPTION (INCLUDE QUAD AND YEAR IN DESCRIPTION)	BM NUMBER
BASELINE (1955)	68.760	L+T C/L INT PITTS AVE + ALONDRA BLVD	SY 769A
BASELINE (1955)	67.854	L+T C/L HAYTER AVE 8FT± S C/L ALONDRA BLVD	SY 770A
BASELINE (1955)	108.639	L+N IN WK 50FT± N C/L COLE ST 50FT± W C/L PARAMOUNT BLVD	SY 773A
BASELINE (1955)	107.723	L+N NR N END CB RET @ NW COR PARAMOUNT BLVD + ALBIA ST	SY 774A
BASELINE (1955)	106.320	CUT SPK CONC PVMT 14FT± W C/L PARAMOUNT BLVD ON C/L PROD ALAMEDA ST	SY 775A
BASELINE (1955)	106.272	L+N CTR CB RET @ SW COR MELVA ST + PARAMOUNT BLVD	SY 776A
BASELINE (1955)	105.113	L+T 14FT± E C/L PARAMOUNT BLVD 11FT± N C/L SPRINGER ST PROD IN CONC PVMT	SY 777A
BASELINE (1955)	104.182	L+T IN CONC 14FT± E C/L PARAMOUNT BLVD 4FT±N C/L GUILL DR PROD	SY 778A
BASELINE (1955)	90.673	L+N NR N END CB RET @ NE COR PARAMOUNT BLVD + ADGREE AVE	SY 779A
BASELINE (1955)	89.399	SPK + W @ INT PARAMOUNT BLVD + DEVENIR AVE	SY 780A
BASELINE (1955)	87.190	ST + W @ INT PARAMOUNT BLVD + COUNTRY FARM DR	SY 781A
BASELINE (1955)	85.993	SPK + W @ INT PARAMOUNT BLVD + PRICILLA AVE	SY 782A
BASELINE (1955)	82.802	CS MON 16FT± W + 5FT± S INT PARAMOUNT BLVD + GARDENDALE ST	SY 783
BASELINE (1955)	83.155	L+T IN E CB PARAMOUNT BLVD 3FT± S OF CB RET @ SE COR PARAMOUNT BLVD + MCKINLEY AVE	SY 784A
BASELINE (1955)	82.722	L+T IN E CB PARAMOUNT BLVD 21FT± N OF CB RET @ NE COR PARAMOUNT BLVD + ALHAMBRA AVE	SY 785A
BASELINE (1955)	81.564	L+T IN N CB GOLDEN AVE 4FT± W OF CB RET @ NE COR PARAMOUNT BLVD + GOLDEN AVE	SY 786B
BASELINE (1955)	81.250	L+T NEAR CTR OF CB RET @ SE COR PARAMOUNT BLVD + GOLDEN AVE	SY 787B
BASELINE (1955)	80.842	L+SPK E CB PARAMOUNT BLVD 50FT± S C/L HARDING AVE PROD	SY 788B
BASELINE (1955)	80.403	L+T IN E CB PARAMOUNT BLVD 35FT± N OF C/L LINCOLN AVE PROD	SY 789A
BASELINE (1955)	79.708	L+T IN E CB PARAMOUNT BLVD 2FT S OF CB RET @ NE COR PARAMOUNT BLVD + FLORENCE AVE	SY 790A
BASELINE (1955)	78.047	L+T IN CB RET @ NE COR PARAMOUNT BLVD + CENTURY BLVD 10FT± S OF BCR ON PARAMOUNT BLVD	SY 791A
BASELINE (1955)	76.586	BT SPK 1FT± S CB RET @ SW COR PARAMOUNT BLVD + PEARLE ST	SY 792A
BASELINE (1955)	75.825	BT SPK BCR @ SW COR PARAMOUNT BLVD + HOWE ST	SY 793A

QUAD-YEAR	ELEV	DESCRIPTION (INCLUDE QUAD AND YEAR IN DESCRIPTION)	BM NUMBER
BASELINE (1955)	76.617	BT SPK CTR CB RET @ NW COR PARAMOUNT BLVD + ROSE ST	SY 794A
BASELINE (1955)	71.848	L+T W CB PARAMOUNT BLVD C/L PROD 3RD ST	SY 795A
BASELINE (1955)	72.955	BT SPK 1FT± S CB RET SE COR PARAMOUNT BLVD + 1ST ST	SY 796A
BASELINE (1955)	72.657	CS MON 17FT± W INT PARAMOUNT BLVD + COMPTON BLVD	SY 797A
BASELINE (1955)	72.712	L+T CTR CB RET SE COR PARAMOUNT BLVD + ADAMS ST	SY 798
BASELINE (1955)	68.962	L+T W CB PARAMOUNT BLVD 2FT± N CB RET @ NW COR MADISON ST + PARAMOUNT BLVD	SY 799A
BASELINE (1955)	77.504	L+T IN W CB PARAMOUNT BLVD 5.5FT± SO OF CB RET @ SW COR CENTURY BLVD + PARAMOUNT BLVD	SY 812A
BASELINE (1955)	73.861	L+T S CB ALONDRA BLVD 68FT± W C/L WOODRUFF AVE	SY 960A
BASELINE (1955)	77.152	L+T NR S EDGE CONC DRWY 55FT± W C/L WOODRUFF AVE DRWY TO HSE NO 15509	SY 961
BASELINE (1955)	78.775	L+T NR S EDGE N STRIP CONC DRWY 50FT± E C/L WOODRUFF AVE @ HSE NO 15304	SY 962
NORWALK (1960)	88.195	RDBM TAG W CB WOODRUFF AVE 40FT± W/O C/L 20FT± S/O C/L PROD ARTHURDALE ST	SY 963A
NORWALK (1960)	90.274	CS MON IN WELL 6 INCHES DN @ OR NEAR C/L INT WOODRUFF AVE + FOSTER RD MKD (RE 329)	SY 964A
NORWALK (1960)	90.696	L+T N CB 1.5FT± W BCR @ NW COR WOODRUFF AVE + FOSTER RD 36FT± N/O + 100FT± W/O C/L INT MKD (BM)	SY 965
NORWALK (1960)	91.254	L+T 1FT± W ECR @ SW COR WOODRUFF AVE + BELCHER ST	SY 966
NORWALK (1960)	92.021	L+T 1FT± S BCR @ SW COR RATLIFF ST + WOODRUFF AVE SERVICE RD	SY 967
NORWALK (1960)	95.608	RDBM TAG S CB 5FT± W/O BCR @ SE COR IMPERIAL HWY + WOODRUFF AV 41FT± S/O + 65FT± E/O C/L INT	SY 968A
NORWALK (1960)	98.591	LS TAG NO 2428 E CB WOODRUFF AVE ON OR NEAR C/L PROD EVEREST ST 55FT± E/O C/L IN ENTRANCE TO SCHOOL BUS DRIVE	SY 969A
NORWALK (1960)	97.657	CITY OF DOWNEY MON IN WELL 10 INCHES DN @ OR NEAR C/L INT WOODRUFF AVE + EVEREST ST MKD (MON 13)	SY 970A
NORWALK (1960)	100.905	RDBM TAG W CB 45FT± S/O ECR @ SW COR WOODRUFF AVE + WASHBURN RD 90FT± S/O + 40FT± W/O C/L INT	SY 971A
NORWALK (1960)	100.656	CS MON IN WELL 10 INCHES DN @ OR NEAR C/L INT WOODRUFF AVE + WASHBURN RD MKD (CO SUR MON RE329)	SY 972A
NORWALK (1960)	104.046	RDBM TAG W CB 1FT± S/O BCR @ SW COR WOODRUFF AVE + STEWART+GRAY RD 70FT± S/O + 40FT± W/O C/L INT	SY 973A
NORWALK (1960)	103.788	CITY OF DOWNEY MON IN WELL 14 INCHES DN @ OR NEAR C/L INT WOODRUFF	SY 974A

JUL 1964

LOS ANGELES COUNTY ROAD DEPARTMENT  
SURVEY SECTION FIELD ENGINEERING DIVISION

PAGE 6

QUAD-YEAR	ELEV	DESCRIPTION (INCLUDE QUAD AND YEAR IN DESCRIPTION)	BM NUMBER
NORWALK (1960)	77.654	RAILROAD SPK @ INT PERR (SANTA ANA LINE) + LAKEWOOD BLVD	SY 1091
NORWALK (1960)	110.810	CS MON INT BLOOMFIELD AV + IMPERIAL HWY	SY 1124
NORWALK (1960)	122.614	L+T WLY CB 1FT± NLY BCR @ NWLY COR IMPERIAL HWY + SHOEMAKER AVE 80FT± NLY + 32FT± WLY APPROX C/L INT	SY 1125A
NORWALK (1960)	121.400	L+T W END CONC STEP HSE NO 13011 50FT± N C/L IMPERIAL HWY @ NE COR SHOEMAKER AVE	SY 1126
NORWALK (1960)	101.138	L+T CONC BASE W GATE POST 55FT± S C/L IMPERIAL HWY 20FT± W PP NO 654558E APPROX 1000FT± E LEFFINGWELL RD	SY 1127
NORWALK (1960)	103.842	L+T N CB CTR BRIDGE NO 816 ON IMPERIAL HWY BETWEEN CARMENITA RD + MEYER RD	SY 1129
BASELINE (1955)	144.402	CS TRI MON IN WELL 8IN DN 0.2MI± N IMPERIAL HWY + 11FT± W C/L VALLEY VIEW AVE NR CREST OF HILL MKD (WHITTIER I-10A)	SY 1131A
BASELINE (1955)	188.898	L+T 10FT± S BCR @ NW COR TELEGRAPH RD + COLIMA RD 64FT± N + 21FT± W C/L INT	SY 1158A
BASELINE (1955)	195.476	CS TRI MON IN WELL 12IN DN @ DR NR C/L INT TELEGRAPH RD + VALLEY VIEW AVE (N) MKD (WHITTIER I-9 AUX 1 1960)	SY 1159A <sup>B</sup>
BASELINE (1955)	175.619	L+SPK N BCR @ NE COR TELEGRAPH RD + CERES ST 61FT± N + 20FT± E C/L INT MKD (WZ 399)	SY 1160A <sup>B</sup>
BASELINE (1955)	167.625	L+N CTR RET PKWY TO HUGHSTON MEADOWS INN 45FT± S C/L TELEGRAPH RD (NO 1440)	SY 1161A
BASELINE (1955)	134.857	L+T N CB 1FT± W BCR @ NW COR TELEGRAPH RD + VICTORIA AVE 42FT± N + 48FT± W C/L INT	SY 1162C
BASELINE (1955)	135.237	RDSM TAG E CB ON NE COR TELEGRAPH RD + VICTORIA AVE 88FT± N + 20FT± E C/L INT	SY 1163B
BASELINE (1955)	154.653	RD HD SPK NE COR CONC APRON GAS STA SW COR TELEGRAPH RD + MILLS AVE 515FT± S + 55FT± W C/L INT MKD (WZD 75)	SY 1164A
BASELINE (1955)	155.291	CT SPK CONC CB 20FT± N C/L TELEGRAPH RD + 28FT± E MILLS AVE	SY 1165A
BASELINE (1955)	148.780	L+N @ END OF CB 175FT W SANTA FE RR TRACKS + 33FT S C/L TELEGRAPH RD W OF LELAND AVE	SY 1166A
BASELINE (1955)	162.881	L+N 4FT± W BCR @ SW COR INEZ ST + TELEGRAPH RD	SY 1167A <sup>B</sup>
BASELINE (1955)	161.965	L+T 1FT± W BCR @ SW COR MINA ST + ANAHEIM TEL RD	SY 1168A
BASELINE (1955)	157.582	L+T N CB 3FT± E OF BCR @ NE COR TELEGRAPH RD + CARMENITA RD 38FT± N + 50FT± E C/L INT	SY 1169A
BASELINE (1955)	156.696	CS TRI MON IN WELL 14IN DN SE COR TELEGRAPH RD + CARMENITA RD 15FT± S + 25FT± E C/L INT MKD (WHITTIER G8)	SY 1170A
BASELINE (1955)	158.581	L+T N CB 36FT± W BCR @ NW COR TELEGRAPH R + LAUREL AVE 30FT± N + 92FT± W C/L INT	SY 1171A

JUL 1964

LCS ANGELES COUNTY ROAD DEPARTMENT  
 SURVEY SECTION FIELD ENGINEERING DIVISION

PAGE 7

QUAD-YEAR	ELEV	DESCRIPTION (INCLUDE QUAD AND YEAR IN DESCRIPTION)	BM NUMBER
BASELINE (1955)	161.900	L+T E EDGE CONC DRWY HSE NO 14312 37FT± S C/L LEFFINGWELL RD	SY 1181
BASELINE (1955)	158.642	CS REF MON IN WELL 13IN DN ON SE LY COR VALLEY VIEW AVE + LEFFINGWELL RD 50FT± S + 60FT± E C/L INT MKD (RM NO 41-10 1960)	SY 1182A
NORWALK (1960)	111.248	(X) TOP FIRE PLUG @ NE COR LOMA DR + LEFFINGWELL RD	SY 1184A
NORWALK (1960)	109.374	L+T ELY CB 7FT± NLY BCR @ NELY COR LEFFINGWELL RD + MEYER RD 48FT± NLY * 40FT± ELY APPROX C/L INT	SY 1186A
NORWALK (1960)	110.350	RD HD SPK WLY CB 5FT± SLY BCR @ SWLY COR LEFFINGWELL RD + LELAND AVE 100FT± SLY 17FT± W/O A---CC C/L + N MK+80 1604) APPROX MKD (SD 1604)	SY 1187A
NORWALK (1960)	114.603	L+T NW COR CONC DRWY 60FT± S C/L LEFFINGWELL RD @ HSE NO 13474 + 40FT± W C/L INEZ ST	SY 1188
NORWALK (1960)	117.078	L+T S END E GAS ISLAND SERVICE STATION @ NE COR CARMENITA RD + LEFFINGWELL RD	SY 1189
NORWALK (1960)	114.666	L+T 1FT± FROM END CONC WK 50FT± N C/L LEFFINGWELL RD + 70FT± E LOUIS AVE	SY 1190
NORWALK (1960)	124.599	L+T E EDGE CONC DRWY E HSE NO 12175 50FT± N C/L LEFFINGWELL RD + 180FT± W C/L LAUREL AVE	SY 1191
BASELINE (1955)	188.768	CS MON IN WELL 6IN DN ON C/L TELEGRAPH RD 10FT± ELY C/L COLIMA RD MKD (CD. ENG. MON RE 5869)	SY 1234A
BASELINE (1955)	126.051	SET RDBM TAG N CB 1FT± E BCR @ NE COR PARAMOUNT BLVD + FLORENCE AVE 40FT± N + 68FT± E C/L INT	SY 1299A
NORWALK (1960)	124.873	L+B S CB 15FT± W OF BCR @ SW COR FLORENCE AVE + LA REINA AVE 40FT± S + 68FT± W C/L INT MKD (BM)	SY 1301A
NORWALK (1960)	125.299	L+T 40FT± S C/L FLORENCE AVE @ OR NEAR C/L PRCD LA REINA AVE TO THE N MKD (BM)	SY 1302A
NORWALK (1960)	126.178	L+T 5FT± E END CB @ SE COR DOWNEY AVE + FLORENCE AVE 50FT± E C/L DOWNEY AVE TO THE S	SY 1303
NORWALK (1960)	127.049	L+BN 40FT± E MAC DRWY TO HSE NO 8406 S CB FLORENCE AVE 700FT± E DOWNEY AVE	SY 1304
NORWALK (1960)	129.770	L+T 2FT± W END CB 40FT± S C/L FLORENCE AVE 62FT± W C/L LEXINGTON-GALLATIN RD	SY 1305
NORWALK (1960)	127.780	L+T 2IN± E CB RET SE COR BIRCHDALE AVE + FLORENCE AVE	SY 1307
NORWALK (1960)	127.089	L+T 1IN± E CB RET @ SE COR FLORENCE AVE + FLORENCIA AVE	SY 1308
NORWALK (1960)	126.361	L+BN W CB 16FT± S BCR @ SW COR FLORENCE AVE + LAKEWOOD BLVD 80FT± S + 40FT± W C/L INT MKD (BM)	SY 1309A
NORWALK (1960)	125.715	L+BN E CB (DEPRESSED) 15FT± S OF BCR @ SE COR FLORENCE AVE + LAKEWOOD BLVD 90FT± S + 40FT± E C/L INT MKD (BM)	SY 1310A
NORWALK (1960)	125.527	L+T S CB 38FT± S C/L OF FLORENCE AVE 48FT± W C/L HAILETON AVE (PRCD) MKD (BM)	SY 1311A
NORWALK (1960)	125.801	L+T W CB 4FT± N OF BCR @ NW COR HAILETON AVE + FLORENCE AVE 78FT± N + 20FT± W C/L INT MKD (BM)	SY 1312A

JUL 1964

LOS ANGELES COUNTY ROAD DEPARTMENT  
SURVEY SECTION FIELD ENGINEERING DIVISION

PAGE 8

QUAD-YEAR	ELEV	DESCRIPTION (INCLUDE QUAD AND YEAR IN DESCRIPTION)	BM	NUMBER
NORWALK (1960)	128.781	L+PK 38FT± N C/L FLORENCE AVE 21FT± W C/L PROD OF WOODRUFF AVE	SY	1313A
NORWALK (1960)	125.175	RDBM TAG N CB 1FT± W OF BCR @ NW COR DOWNEY- SANFORD BRIDGE RD + FLORENCE AVE 38FT± N + 55FT± N C/L INT	SY	1314A
NORWALK (1960)	124.751	L+T 38FT± S C/L FLORENCE AVE ON OR NEAR C/L PROD OF DOWNEY-SANFORD BRIDGE RD MKD (BM)	SY	1315A
NORWALK (1960)	121.210	L+T IN S CB 4FT± W OF BCR OF SW COR LESTERFORD AVE + FLORENCE AVE 38FT± S + 58FT± W C/L INT MKD (BM)	SY	1316A
NORWALK (1960)	121.436	L+SPK N EDGE CONC PVMT FLORENCE AVE ON LINE OF BRICK + IRON ORNAMENTAL FENCE E/O HSE NO 9620 150FT± W LESTERFORD AVE	SY	1317A
NORWALK (1960)	133.855	C OF ENG BR CAP N CB @ W END OF BRIDGE NO B933 ON FLORENCE AVE OVER SAN GABRIEL RIVER MKD (1959)	SY	1318A
NORWALK (1960)	131.462	C OF ENG BR CAP N CB @ E END BRIDGE NO B933 ON FLORENCE AVE OVER SAN GABRIEL RIVER MKD (1959)	SY	1319A
NORWALK (1960)	118.321	RDBM TAG S OF CB 1FT± E/O BCR @ SW COR FLORENCE AVE + FAIRFORD AVE 38FT± S + 18FT± W/O C/L	SY	1320A
NORWALK (1960)	119.722	LA CO RDBM TAG E CB 1FT± S/O BCR @ SE COR FLORENCE AVE + FAIRFORD AVE 125FT± S + 20FT± E/O C/L INT	SY	1321A
NORWALK (1960)	121.854	L+T N CB 1FT± W/O BCR @ NW COR FLORENCE AVE + ORR + DAY RD 38FT± N + 75 FT± W/O C/L INT MKD (BM)	SY	1324A
NORWALK (1960)	121.027	RDBM TAG N CB 1FT± W/O BCR @ NE COR FLORENCE AVE + ORR + DAY RD 38FT± N + 75FT± E/O C/L INT	SY	1325B
NORWALK (1960)	118.874	RDBM TAG N CB 1FT± E/O BCR @ NE COR FLORENCE AVE + PIONEER BLVD 38FT± N + 76FT ± E/O C/L INT	SY	1328A
NORWALK (1960)	118.692	RDBM TAG S CB 5FT± W/O BCR @ SE COR FLORENCE AVE + PIONEER BLVD 38FT± S/O + 70FT± E/O C/L INT	SY	1329A
NORWALK (1960)	126.706	L+BN W END CB FRONT LITTLE LAKE SCHOOL 33FT± S C/L FLORENCE AVE BET PIONEER BLVD + NORWALK BLVD	SY	1330
NORWALK (1960)	127.345	L+BN BASE OF FLAG POLE @ ENT TO LITTLE LAKE SCHOOL 67FT± S/O CL FLORENCE AVE 1000FT± W/O PIONEER BLVD	SY	1331A
BASELINE (1955)	124.288	L+BN W ED CONC BASE CONC WATER TANK 60FT± E C/L PIONEER BLVD 100FT± NE DRWY HSE NO 10325 PIONEER BLVD W STANDARD OF CALIF OIL DERRICK NO 17	SY	1344A
BASELINE (1955)	131.842	RDBM TAG IN S CB TELEGRAPH RD 2FT± W/O SW CB RET @ MIAN DRWY TO SANTA FE SPRINGS FIRE STA BLDG NO 11736 40FT± S/O C/L TELEGRAPH RD + 390FT± W/O C/L PIONEER BLVD	SY	1345A
BASELINE (1955)	131.198	L+BN 6IN CONC RETAINING WALL 55FT± S C/L TELEGRAPH RD 300FT± W C/L PIONEER BLVD	SY	1346A
BASELINE (1955)	132.177	CS MON IN WELL @ C/L INT TELEGRAPH RD + ALBURTIS AVE NLY MKD (LACS CON SYS TRA STA WHITTIER B-7 RE2177 1941)	SY	1348A
BASELINE (1955)	133.241	L+T NEAR CTR CB RT @ NE COR TELEGRAPH RD + ORR + DAY RD	SY	1349A

JUL 1964

LOS ANGELES COUNTY ROAD DEPARTMENT  
SURVEY SECTION FIELD ENGINEERING DIVISION

PAGE 9

QUAD-YEAR	ELEV	DESCRIPTION (INCLUDE QUAD AND YEAR IN DESCRIPTION)	BM NUMBER
BASELINE (1955)	133.111	RDBM TAG IN W CB 1FT± S BCR 68FT± S + 38FT± W C/L INT TELEGRAPH RD + ORR + DAY RD	SY 1350A
NORWALK (1960)	130.599	L+T E CB W SERVICE RD 4FT± S BCR 50FT± W + 40FT± S C/L INT ORR + DAY RD + DAVENRICH ST MKD (BM)	SY 1351A
NORWALK (1960)	130.199	L+T W CB W SERVICE RD 15FT± S BCR 78FT± W + 60 FT± S C/L INT ORR + DAY RD + DAVENRICH ST MKD (BM)	SY 1352A
NORWALK (1960)	128.617	L+T IN E CB W SERVICE RD 12FT± N BCR 50FT± W + 46FT± N C/L INT ORR + DAY RD + DUNNING ST MKD (BM)	SY 1353A
NORWALK (1960)	128.187	L+T NE COR LAWN CB @ HSE NO 10317 ORR + DAY RD 23FT± W C/L ORR + DAY RD	SY 1354A
NORWALK (1960)	123.820	RDBM TAG IN W CB ORR + DAY RD 1FT± S BCR 40FT± W 35FT± S C/L INT CLARKMAN ST	SY 1355A
NORWALK (1960)	123.805	1IN 1P 1FT DP 20FT± E C/L ORR + DAY RD 43+91.50 72FT± N PP NO 53802E (4TH POLE N FLORENCE AVE)	SY 1356A
BASELINE (1955)	124.713	CS BR CAP CONC MON C/L INT PARAMOUNT BLVD + FLORENCE AVE	SY 1386
BASELINE (1955)	127.454	L+BN CTR CB RET SE COR LUBEC ST + PARAMOUNT BLVD	SY 1387A
BASELINE (1955)	127.674	L+BN CTR CB RET NE COR LUBEC ST + PARAMOUNT BLVD	SY 1388A
BASELINE (1955)	130.641	L+BN 2FT± FROM END W CB FRONT HSE NO 9603 PARAMOUNT BLVD	SY 1389
BASELINE (1955)	132.090	L+T CONC CB @ BCR SE COR SUVA ST + PARAMOUNT BLVD	SY 1390
BASELINE (1955)	134.473	L+T CONC CB @ BCR SE COR GALLATIN SCHOOL HOUSE RD + PARAMOUNT BLVD	SY 1391
BASELINE (1955)	134.492	L+T CONC CB @ BCR SW COR GALLATIN SCHOOL HOUSE RD + PARAMOUNT BLVD	SY 1392
BASELINE (1955)	138.713	SQ HD SPK W CB OF SERVICE RD OF PARAMOUNT BLVD 12FT± N C/L PRCD BROOKGREEN RD	SY 1394A
BASELINE (1955)	139.675	FD L+BRAD E CB 0.5FT± S BCR @ SE COR PARAMOUNT BLVD + VISTA DEL ROSA SERVICE ISLAND 40FT± E + 50FT± S C/L INT	SY 1395A
BASELINE (1955)	142.240	CS MON IN WELL 8IN DN ON C/L TELEGRAPH RD 20FT± WLY C/L PARAMOUNT BLVD MKD (BELL K4 1941)	SY 1397A
BASELINE (1955)	140.657	L+T 1FT± E BCR @ NE COR FERNADEL ST + TELEGRAPH RD (IN SERVICE RD CB)	SY 1592
BASELINE (1955)	142.851	L+BN 4FT± S BCR @ SW COR BIRCHBARK AVE + TELEGRAPH RD	SY 1593
BASELINE (1955)	145.227	L+BN 4FT± S BCR @ SW COR STAMPS RD + TELEGRAPH RD	SY 1594
BASELINE (1955)	142.440	L+BN 30FT± S BCR @ SW COR STOAKES AVE + TELEGRAPH RD	SY 1595
BASELINE (1955)	138.869	RAM SET CTR CB RET SE COR LAKEWOOD BLVD + TELEGRAPH RD 55FT± S + 55FT± E C/L INT	SY 1596

QUAD-YEAR	ELEV	DESCRIPTION (INCLUDE QUAD AND YEAR IN DESCRIPTION)	BM NUMBER
BASELINE (1955)	138.066	CS MON MKD (LACO SUR CONT SUST TRA STA BELL K-5A RE2177 1941) IN WELL W/COVER @ CL INT TELEGRAPH RD + LAKEWOOD BLVD	SY 1597A
BASELINE (1955)	138.724	L+T S END W GAS ISLAND NE COR TELEGRAPH RD + SERAPIS AVE	SY 1599A
BASELINE (1955)	137.421	L+T IN S CB TELEGRAPH RD 6FT± W/O CB RET @ SE COR SERAPIS AVE 40FT± S + 50FT± E/O C/L INT	SY 1600A
BASELINE (1955)	141.486	L+BN 1FT FROM BCR SERVICE RD N CB @ PASSONS BLVD + TELEGRAPH RD 50FT± S C/L TELEGRAPH RD	SY 1601A
BASELINE (1955)	140.274	CS MON IN WELL @ C/L INT TELEGRAPH RD + PASSONS BLVD MKD (LACO SUR CONT SYST TRA STA BELL 1-6 RE 2177 1941)	SY 1602
NORWALK (1960)	108.648	CITY ENG TAG E CB 5FT± S/O BCR @ SE COR WOODRUFF AVE + FIRESTONE BLVD 110FT± S/O + 40FT± E/O C/L INT	SY 1690A
NORWALK (1960)	108.775	L+BN S CB FIRESTONE BLVD 50FT± S/O C/L + 175FT± E/O C/L PROC WOODRUFF AVE TO N CB PAINTED (CBM =3)	SY 1691A
NORWALK (1960)	112.212	L+BRAD S CB 4FT± E/O BCR @ SE COR WOODRUFF AVE + FOSTORIA ST 15FT± S/O + 50FT± E/O C/L INT MKD (BM)	SY 1692A
NORWALK (1960)	116.717	L+BN E CB 1FT± N BCR @ NE COR WOODRUFF AVE + BUELL ST	SY 1693
NORWALK (1960)	112.315	L+BRAD N CB 4FT± E/O BCR @ NE COR WOODRUFF AVE + FOSTORIA ST 15FT± N + 50FT± E/O C/L INT	SY 1694A
NORWALK (1960)	119.859	RD MON IN WELL 8 INCHES DN @ DR NEAR C/L INT WOODRUFF AVE + GOTHAM ST MKD (LACO RD DEPT 1954)	SY 1695A
NORWALK (1960)	120.367	L+T N CB 2FT± E BCR @ NE COR WOODRUFF AVE + GOTHAM ST 18FT± N/O + 47FT± E/O C/L INT	SY 1696A
NORWALK (1960)	128.962	L+T C/L INT WOODRUFF AVE + FLORENCE AVE	SY 1697
BASELINE (1955)	138.596	L+B W ECR @ SW COR TRUE AVE + TELEGRAPH RD (SERVICE RD)	SY 1708A
BASELINE (1955)	137.695	CS BR CAP CONC MON IN CASING + COVER PI 6.82FT E C/L INT TRUE AVE + TELEGRAPH RD	SY 1709
BASELINE (1955)	140.164	L+BN 1FT± E ECR SERVICE RD N CB NE COR SONGFEST DR + TELEGRAPH RD	SY 1710
BASELINE (1955)	140.524	L+T 2FT± S BCR @ SW COR HASTY AVE + TELEGRAPH RD	SY 1711
BASELINE (1955)	83.781	RDBM TAG S CB 3.5FT± W BCR @ SW COR ROSECRANS AVE + BLOOMFIELD AVE 61FT± W + 40FT± S C/L INT	SY 1777A
BASELINE (1955)	83.817	RD MON E END S HDWL 24FT± E C/L BLOOMFIELD AVE 338FT± S C/L ROSECRANS AVE MKD (RD DEPT NO171)	SY 1778A
BASELINE (1955)	157.909	L+T W CB 1FT± N BCR @ NW COR TELEGRAPH RD + LAUREL AVE 68FT± N + 20FT± W C/L INT	SY 1830A
BASELINE (1955)	160.870	L+N IN WK @ STEPS HSE NO 13026 TELEGRAPH RD (1ST HSE E OF SHOEMAKER AVE)	SY 1833A



JUL 1964

LOS ANGELES COUNTY ROAD DEPARTMENT  
SURVEY SECTION FIELD ENGINEERING DIVISION

PAGE 11

QUAD-YEAR	ELEV	D E S C R I P T I O N (INCLUDE QUAD AND YEAR IN DESCRIPTION)	BM	NUMBER
BASELINE (1955)	159.619	L+T SW COR CONC VALVE BOX ON NW COR TELEGRAPH RD + SHOEMAKER AVE 32FT± N + 13FT± W C/L INT	SY	1834A
BASELINE (1955)	156.422	L+T SW COR CONC BASE SW COR STEEL TOWER 47FT± E C/L ROMMANDEL AVE 57FT± N C/L TELEGRAPH RD	SY	1835A
BASELINE (1955)	155.014	CHIS X ON E BOLT W CONC BOX 13FT± W SANTA FE OUTBOUND TRACK + 60FT± S C/L TELEGRAPH RD	SY	1836A
BASELINE (1955)	151.990	CS MON IN WELL 8IN DN @ CR NR C/L INT TELEGRAPH RD + BLOOMFIELD AVE MKD (WHITTIER E7-A)	SY	1837A
BASELINE (1955)	153.838	L+T 1FT± N SE COR 1ST CONC STEP 70FT± N C/L TELEGRAPH RD + 67FT± W C/L BLOOMFIELD AVE	SY	1838A
BASELINE (1955)	146.689	L+BN NW COR CONC BASE OF GAS ENGINE FOR WELL NO 7-TEXAS CO WEAVER LEASE 65FT± S C/L TELEGRAPH RD 84FT± E C/L SPRING ST	SY	1839
BASELINE (1955)	144.148	L+BN NR NE COR CONC BASE NE COR OIL DERRIC SW COR WILLIS ST + TELEGRAPH RD	SY	1840
BASELINE (1955)	109.791	L+T 1FT± S BCR @ SE COR PARAMOUNT BLVD + STEWART + GRAY RD	SY	1870A
BASELINE (1955)	90.290	RDBM TAG S CB ROSECRANS AVE 40FT± S C/L @ ANG PT OF CB TO BRIDGE OVER SAN GABRIEL RIV 500FT± W BRIDGE	SY	1989A
BASELINE (1955)	83.098	L+T 0.3FT± E CB RET @ SE COR BEHRENS AVE + ROSECRANS AVE (SERVICE RD)	SY	1990A
NORWALK (1960)	114.636	L+T 5FT± E CB RET @ SW COR 1ST ALLEY S OF FIRESTONE BLVD + DOWNEY AVE	SY	2002
NORWALK (1960)	99.648	L+T W CB LAKEWOOD BLVD 2FT± S/O CB RET @ SW COR LAKEWOOD BLVD + ALAMEDA ST	SY	2019
BASELINE (1955)	83.591	L+T 18FT± W CB RET @ SW COR PARAMOUNT BLVD + GARDENDALE ST	SY	2041
NORWALK (1960)	137.234	RDBM TAG W CB 0.5FT± N/O BCR @ NW COR LAKEWOOD BLVD + GALLATIN RD 63FT± N + 40FT± W C/L INT	SY	2053A
NORWALK (1960)	136.924	RDBM TAG W CB 3.5FT± S/O BCR @ SW COR LAKEWOOD BLVD + GALLATIN RD	SY	2054A
NORWALK (1960)	133.209	L+BN W CB LAKEWOOD BLVD N SIDE OF CONC APRON OF DRWY HSE NO 9627 900FT± S/O GALLATIN SCHOOL HOUSE RD	SY	2055
NORWALK (1960)	128.771	L+BN W CB LAKEWOOD BL 900FT± N/O C/L FLORENCE AVE (FIRST TRAFFIC CROSSOVER N/O FLORENCE AVE)	SY	2056
NORWALK (1960)	130.319	RDBM TAG E CB SERVICE RD ON NE COR LAKEWOOD BLVD + LUBEC ST 45FT± N/O + 80FT± E/O C/L INT	SY	2057A
NORWALK (1960)	119.598	L+T 1FT± W/O CB RET @ NW COR GOTHAM ST + LAKEWOOD BLVD	SY	2058
NORWALK (1960)	119.527	LS TAG 2428 S CB 1.5FT± W/O BCR @ SW COR LAKEWOOD BL + CHEROKEE DR	SY	2059A
NORWALK (1960)	114.590	L+BN 2FT± N/O CB RET @ SW COR 5TH ST + LAKEWOOD BLVD	SY	2060
NORWALK (1960)	112.838	L+BN W CRB 2FT± S/O CB RET @ SW COR LAKEWOOD BLVD + STONEWOOD ST	SY	2061

JUL 1964

LOS ANGELES COUNTY ROAD DEPARTMENT  
SURVEY SECTION FIELD ENGINEERING DIVISION

PAGE 12

QUAD-YEAR	ELEV	DESCRIPTION (INCLUDE QUAD AND YEAR IN DESCRIPTION)	BM NUMBER
NORWALK (1960)	109.017	L+T W CB LAKEWOOD BLVD 75FT± S/O C/L INT LAKEWOOD BLVD + BELLFLOWER 12FT± S/O SEDGE CONC DRWY ALLEY LUMBER CO NO 11401	SY 2064
NORWALK (1960)	106.838	L+BN W CB 2FT± N/O C/L INT LAKEWOOD BLVD + HALL RD 3FT± N/O OF PP NO 506381E	SY 2065
NORWALK (1960)	106.257	L+BN 2FT± N/O CRB RET @ NW COR PALM ST + LAKEWOOD BLVD (PALM ST TO BE NAMED CLETA ST)	SY 2066
NORWALK (1960)	104.228	L+T 0.7FT± N BCR OF SERVICE ISLAND ON NW COR LAKEWOOD BLVD + STEWART+GRAY RD 45FT± N/O + 43FT± W/O C/L INT MKD BM	SY 2067A
NORWALK (1960)	104.67	RDBM TAG S CB 1FT± W BCR @ SW COR LAKEWOOD BLVD + STEWART+GRAY RD 30FT± S/O + 76FT± W/O C/L INT	SY 2068A
NORWALK (1960)	102.899	L+SPK W CB LAKEWOOD BLVD 15FT± S/O DRIVE ENT GARDEN OF LEBANON SANITARIUM NO 12023	SY 2069
NORWALK (1960)	98.223	L+T C/L PROC MORY ST W CB OF PARKWAY OF LAKEWOOD BLVD APPROX 48FT W + 130FT N INT LAKEWOOD BLVD + CLARK AVE	SY 2070
NORWALK (1960)	97.000	L+T CTR CB RET S END OF PARKWAY 40FT± W C/L LAKEWOOD BLVD + 30FT± N/O C/L DONOVAN ST	SY 2071
NORWALK (1960)	96.935	L+T CTR CB RET N END OF PARKWAY 40FT± W C/L LAKEWOOD BLVD + 30FT± S C/L DONOVAN ST	SY 2072
NORWALK (1960)	95.760	L+E NW CB LAKEWOOD BLVD (E CB OF PARKWAY) 1FT± N CB RET @ NW COR LAKEWOOD BLVD + MEADOW ROAD	SY 2073
NORWALK (1960)	92.796	L+BN 2FT± S OF DRWY TO HSE 12813 ON W SIDE LAKEWOOD BLVD	SY 2077
NORWALK (1960)	91.733	L+BN 1FT± N CB RET @ NW COR PRISCILLA ST + LAKEWOOD BLVD	SY 2078
NORWALK (1960)	90.952	L+T 1FT± N CB RET @ NW COR GARDENDALE ST + LAKEWOOD BLVD	SY 2079A
NORWALK (1960)	87.639	L+BN E CB LAKEWOOD BLVD (SERVICE RD) N BCR @ SE COR DALBERG ST + LAKEWOOD BLVD	SY 2081
NORWALK (1960)	86.507	L+BN E CB (SERVICE RD) 6FT± N CB RET @ NE COR LAKEWOOD BLVD SERVICE RD + PEPPERWOOD AVE	SY 2082
NORWALK (1960)	88.012	L+BN W CB E SERVICE RD LAKEWOOD BLVD 2FT± N END CB IN FRONT OF HSE 13348	SY 2083
NORWALK (1960)	89.414	SQ/RD SPK W CB 44FT± N BCR @ NW COR LAKEWOOD BLVD + ROSECRANS BLVD 113FT± N + 38FT± W C/L INT MKD (MVTI)	SY 2084A
NORWALK (1960)	88.806	STATE OF CALIF DIV HWY BRASS CAP CTR RET SW COR LAKEWOOD BLVD + ROSECRANS BLVD 55FT± S + 44FT± W C/L INT MKD (BM 42-A-53)	SY 2085A
NORWALK (1960)	86.106	REINFORCING STEEL ROD IN SW COR CONC APRON TO LAKEWOOD MKT 14610 @ NE COR LAKEWOOD BLVD + E JEFF ST	SY 2086
NORWALK (1960)	85.705	RDBM TAG W CB LAKEWOOD BLVD 38FT± W C/L + 15FT± S APPROX C/L PROC JEFF ST	SY 2087A
NORWALK (1960)	80.443	CD ENG TAG W CB 27FT± N BCR @ NW COR LAKEWOOD BLVD + COMPTON BLVD 93FT± N + 38FT± W C/L INT	SY 2088B

JUL 1964

LOS ANGELES COUNTY ROAD DEPARTMENT  
SURVEY SECTION FIELD ENGINEERING DIVISION

PAGE 13

QUAD-YEAR	ELEV	DESCRIPTION (INCLUDE QUAD AND YEAR IN DESCRIPTION)	BM NUMBER
NORWALK (1960)	79.762	CD ENG TAG W CB 30FT± S BCR @ SW COR LAKEWOOD BLVD + COMPTON BLVD 95FT± S + 38FT± W C/L INT	SY 2089A
BASELINE (1955)	69.100	L+T 1FT± S CB RET @ SW COR CENTER ST + LAKEWOOD BLVD	SY 2093A
BASELINE (1955)	71.072	L+BN N CB PACIFIC AVE 65FT± E CB RET @ NE COR PACIFIC AVE + ALONDRA BLVD	SY 2113A
BASELINE (1955)	84.818	L+T W CB SYLVANWOOD AVE 1FT± N BCR @ NW COR ROSECRANS AVE	SY 2170A
NORWALK (1960)	97.280	L+SPK S CB 30FT± E CB RET @ SE COR SPROUL ST + SAN ANTONIO DR	SY 2269
NORWALK (1960)	97.396	L+T N CB 1FT± E END CB @ NE COR SPROUL ST + SAN ANTONIO DR	SY 2270
NORWALK (1960)	98.143	L+T S CB 1FT± E OF END OF CB (35 FT± E C/L SAN ANTONIO DR) @ SE COR OLIVE ST + SAN ANTONIO DR	SY 2271
NORWALK (1960)	99.630	L+SPK W CB SAN ANTONIO DR 3FT± S CB RET @ SW COR SAN ANTONIO DR + UNION ST	SY 2272
NORWALK (1960)	99.358	CS MON @ C/L INT SAN ANTONIO DR + UNION ST	SY 2273
NORWALK (1960)	105.035	CS MON @ C/L INT IMPERIAL HWY + NORWALK BLVD	SY 2277
BASELINE (1955)	96.379	L+SPK @ CTR CB RET NW COR FIRESTONE BLVD + SAN ANTONIO DR	SY 2278A
BASELINE (1955)	96.884	L+T E CB SAN ANTONIO DR 1FT± S CB RET @ SE COR FIRESTONE BLVD + SAN ANTONIO DR	SY 2279A
<del>NORWALK</del> BASELINE (1960)	100.382	L+T N CB OF PARKWAY BETWEEN IMPERIAL HWY + SERVICE RD 3FT± W/O CB RET 40FT± W/O CL DOWNEY AVE + 35FT S/O C/L IMPERIAL HWY	SY 2327
BASELINE (1955)	66.793	L+BN N CB ALONDRA BLVD 1FTS8 W CB RET @ NW COR ALONDRA BLVD + DOWNEY AVE	SY 2342A
BASELINE (1955)	66.864	L+T CTR CB RET @ SE COR ALONDRA BLVD + DOWNEY AVE	SY 2343A
BASELINE (1955)	99.073	L+BN N CB ROSECRANS AVE NE COR BRIDGE OVER SAN GABRIEL RIV 1FT± W OF E END OF BRIDGE 23FT± N C/L ROSECRANS AVE	SY 2495A
BASELINE (1955)	101.448	L+BN N CB ROSECRANS AVE @ NW COR BRIDGE OVER SAN GABRIEL RIV 1FT± E OF W END OF BRIDGE 23FT± N C/L ROSECRANS AVE	SY 2496A
BASELINE (1955)	87.759	L+BN N CB ROSECRANS AVE 80FT± W OF W EDGE DRWY HSE NO 10433 1FT± E END CB 38FT± N C/L	SY 2497A
BASELINE (1955)	85.200	L+T N CB ROSECRANS AVE 1FT± W END CB ON APPROX E P/L HSE NO 10325	SY 2498
BASELINE (1955)	83.273	L+T N CB @ CB RET @ NW COR ROSECRANS AVE + CARPINTERO AVE	SY 2499A
BASELINE (1955)	84.622	RD MON IN WELL 8IN DN @ OR NR C/L INT WOODRUFF AVE + ROSECRANS AVE MKD (LA CO RD DEPT 1953)	SY 2500A
BASELINE (1955)	84.081	CS MON IN WELL 9IN DN 15FT± S + 12FT± E C/L INT WOODRUFF + ROSECRANS AVE	SY 2501A

JUL 1964

LOS ANGELES COUNTY ROAD DEPARTMENT  
SURVEY SECTION FIELD ENGINEERING DIVISION

PAGE 14

QUAD-YEAR	ELEV	DESCRIPTION (INCLUDE QUAD AND YEAR IN DESCRIPTION)	BM NUMBER
BASELINE (1955)	65.246	C S MON 30FT± N + 80FT± E C/L INT ALONDRA BLVD + DOWNEY AVE 6FT± E OF CATCH BASIN	SY 2587
BASELINE (1955)	66.664	L+T NR W ED OF CONC WK 20FTS8 E OF BLDG NO 8549 ALONDRA BLVD 55FT± N OF C/L ALONDRA BLVD (WSIDE OF DRIVE ENT TO BURGE + GRAY MATERIALS CO YARD) 6FT± N OF BEG OF WK	SY 2588A
BASELINE (1955)	67.839	L+T NR W ED OF CONC WK AROUND HSE NO 8700 ALONDRA BLVD 57FT± S + 25FT± E C/L INT ALONDRA BLVD + HAYTER ST	SY 2589
BASELINE (1955)	69.866	L+T SE COR CONC APRON IN FRONT OF BLDG NO 9161 ALONDRA BLVD 85FT± N C/L ALONDRA BLVD 31FT± W C/L VIRGINIA DR	SY 2593A
BASELINE (1955)	69.045	SPK N EDGE CONC PVMT 22FT± N C/L ALONDRA BLVD 23FT± E TP NO M-1173-Y 10FT± W C/L SANTA ANA AVE 600FT± W CLARK AVE MKD (ML33)	SY 2595A
BASELINE (1955)	67.729	CS MON 30FT± N + 70FT± E C/L INT ALONDRA BLVD + CLARK AVE 6FTS8 S OF N CB + 20FT± E OF CB RET @ NE COR ALONDRA MKD (BM 6-8 RE NO 63-1951)	SY 2596A
BASELINE (1955)	73.636	L+T N CB 4FT± W CB RET @ NW COR ALONDRA BLVD + BLAINE AVE	SY 2597A
BASELINE (1955)	73.780	L+T N CB 2FT± E CB RET @ NE COR ALONDRA BLVD + BLAINE AVE	SY 2598
BASELINE (1955)	74.086	L+BN CB W OF BELLFLOWER WATER CO PLANT NO 1 10FT± S OF S CB ALONDRA BLVD + 18FT± E C/L BLAINE AVE PROD	SY 2599A
BASELINE (1955)	74.479	L+BN S CB 1FT± W CB RET @ SW COR ALONDRA BLVD + BELLFLOWER BLVD	SY 2600
BASELINE (1955)	75.177	L+B NW CB 10FT± S CB RET SW COR EUCALYPTUS AVE + ALONDRA BLVD	SY 2602A
BASELINE (1955)	190.304	CS MON IN WELL BIN DN CTR DIVIDER ISLAND TELEGRAPH RD 6FT± N C/L + 90FT± WLY LEFFINGWELL RD MKD (WHITTIER M 2 BM)	SY 2744A
BASELINE (1955)	188.377	CS MON 11FT± N C/L LEFFINGWELL RD 44FT± W OF C/L INT TELEGRAPH RD + LEFFINGWELL RD 30FT± S C/L TELEGRAPH RD	SY 2745
BASELINE (1955)	189.010	L+T E EDGE CONC WK HSE NO 14436 LEFFINGWELL RD 45FT± S C/L LEFFINGWELL RD 55FT± W C/L BURGESS AVE	SY 2746
BASELINE (1955)	173.417	L+BN E COR RET WALL S SIDE DRWY HSE NO 11761 COLIMA RD @ NW COR LEFFINGWELL RD + COLIMA RD 60FT± N C/L	SY 2747A
BASELINE (1955)	159.456	CS MON 3FT± N C/L LEFFINGWELL RD + 10FT± W C/L VALLEY VIEW AVE 1FT± W OF EDGE OF PVMT	SY 2748
NORWALK (1960)	144.311	L+T SE COR CONC WK AROUND HSE NO 14053 LEFFINGWELL RD 70FT± N C/L LEFFINGWELL RD	SY 2750
NORWALK (1960)	113.342	L+T SE COR CONC WK HSE NO 11837 LOMA DR + 135FT± N LEFFINGWELL RD + 35FT± W C/L LOMA DR	SY 2751
NORWALK (1960)	111.054	L+T SE COR CONC WK HSE NO 13877 LEFFINGWELL RD 55FT± N + 65FT± W C/L INT LEFFINGWELL RD + COTEAU DR	SY 2752

QUAD-YEAR	ELEV	DESCRIPTION (INCLUDE QUAD AND YEAR IN DESCRIPTION)	BM NUMBER
NORWALK (1960)	110.049	L+T S EDGE CONC DRWY HSE NO 12127 RAMSEY DR 30FT± W C/L RAMSEY DR 16CFT± N C/L LEFFINGWELL RD	SY 2753
NORWALK (1960)	<b>OUT</b> 114.140	L+BN CB FRONT HSE NO 12223 LELAND AVE 105FT± N LEFFINGWELL RD 20FT± W LELAND AVE 2FT± N CB END	SY 2756
NORWALK (1960)	115.201	L+BN CB OF CATCH BASIN 20FT± E C/L INEZ ST + 65FT± N C/L LEFFINGWELL RD 5FT± N CB END	SY 2757
NORWALK (1960)	112.263	CS MON IN WELL 10IN DN @ DR NR C/L INT OF CARMENITA RD + LEFFINGWELL RD MKD (WHITTIER G-10 AUX 1960) SLY + WLY OF C/L INT	SY 2758A
NORWALK (1960)	125.063	L+T W END 1ST STEP TO HSE NO 13103 LEFFINGWELL RD 70FT± E C/L PAINTER AVE N LEFFINGWELL RD	SY 2759
BASELINE (1955)	65.533	L+BN W CB 7FT± N OF BCR @ SW COR ALONDRA BLVD + VALLEY VIEW AVE 68FT± S + 40FT± W C/L INT	SY 2771A
BASELINE (1955)	66.101	LACS MON IN WELL W/COVER 100FT± + 12FT± N C/L INT ALONDRA BLVD + VALLEY VIEW AVE	SY 2772A
BASELINE (1955)	66.910	L+T C/L INT VALLEY VIEW AVE + ALONDRA BLVD INT OF 4 L+TS	SY 2773
BASELINE (1955)	69.240	L+BN CONC BASE OF S 6IN IP GATE POST 10FT± W + 15FT± N OF PP NO 449813 E (6TH POLE NO OF ALONDRA BLVD) 30FT± W C/L VALLEY VIEW AVE	SY 2774
BASELINE (1955)	75.911	CHIS (X) TOP OF 3 IN IP 30FT± W C/L VALLEY VIEW AVE 300FT± N DRWY TO HSE NO 15301 310FT± S C/L GANNET ST	SY 2775A
BASELINE (1955)	94.848	L+SPK N CB 4FT± E BCR @ NE COR VALLEY VIEW AVE + STAGE RD 30FT± N + 60FT± E C/L INT CB MKD (RBM 1)	SY 2776A
BASELINE (1955)	94.882	USC+GS MON FLUSH ON NE COR VALLEY VIEW AVE + STAGE RD 31.5FT± N + 87FT± E C/L INT 1.5FT± N CB MKD (K 778-1945)	SY 2777A
BASELINE (1955)	110.402	CS MON IN WELL 12IN DN 11FT± W C/L VALLEY VIEW AVE + 100FT± S C/L ROSECRANS AVE MKD (RE 329)	SY 2778A
BASELINE (1955)	111.686	CS TRI MON IN WELL 14IN DN ON SW COR VALLEY VIEW AVE + ROSECRANS AVE 12FT± S + 11FT± W C/L INT MKD (WHITTIER I 12 1952)	SY 2779A
BASELINE (1955)	112.741	L+T @ C/L INT VALLEY VIEW AVE + ROSECRANS AVE	SY 2780A
BASELINE (1955)	118.298	L+T C/L VALLEY VIEW AVE @ CREST OF GRADE 540FT± N ROSECRANS AVE 55FT± N OF N EDGE OF HSE NO 14021 VALLEY VIEW AVE 4FT± S OF AN EXPANSION JOINT IN CONC PVMT	SY 2781A
BASELINE (1955)	94.404	L+BN NR CTR OF BRIDGE NO 1273 40FT± E C/L VALLEY VIEW AVE + 800FT± S FOSTER RD	SY 2782A
BASELINE (1955)	93.680	L+T IN CHIS SQ 5FT± E C/L VALLEY VIEW AVE + 75FT± N BRIDGE NO B1273 725FT± S FOSTER RD	SY 2783A
BASELINE (1955)	95.678	L+T ON C/L VALLEY VIEW AVE @ INT FOSTER RD (SLY L+T OF 2 L+TS 12FT APART)	SY 2784A
BASELINE (1955)	94.861	CS MON IN WELL 10IN DN ON NE COR VALLEY VIEW AVE + FOSTER RD 62FT± N + 41FT± E C/L INT 1FT± BACK CB MKD (BM 1=6A 1961)	SY 2785A

JUL 1964

LOS ANGELES COUNTY ROAD DEPARTMENT  
SURVEY SECTION FIELD ENGINEERING DIVISION

PAGE 16

QUAD-YEAR	ELEV	DESCRIPTION (INCLUDE QUAD AND YEAR IN DESCRIPTION)	BM NUMBER
BASELINE (1955)	106.158	L+BN E CB 1FT± N BCR @ NE COR VALLEY VIEW AVE + ADOREE ST 57FT± N + 38FT± E C/L INT	SY 2786A
BASELINE (1955)	114.580	CS MON IN WELL 15IN DN ON SE COR VALLEY VIEW AVE + IMPERIAL HWY 100FT± S + 12FT± E C/L INT MKD (BM 1-7 1951)	SY 2787A
BASELINE (1955)	116.081	L+BN E CB 1FT± S BCR @ SE COR VALLEY VIEW AVE + IMPERIAL HWY 76FT± S + 38FT± E C/L INT	SY 2788A
NORWALK (1960)	120.735	L+T NW COR OF 2ND STEP TO PORCH OF HSE NO 14016 IMPERIAL HWY 70FT± S C/L IMPERIAL HWY + 200FT± E C/L IMPERIAL HWY + LOMA DR	SY 2790
NORWALK (1960)	129.778	L+T N CB FLORENCE AVE 2FT± FROM END CB 67FT± W C/L LEXINGTON-GALLATIN RD	SY 2853
BASELINE (1955)	97.342	COSUR MON IN WELL 10IN DN ON NW COR PARAMOUNT BLVD + IMPERIAL HWY 16FT± W 8FT± N C/L INT MKD (BELL F-10A 1928)	SY 3165A
BASELINE (1955)	98.294	CS MON FLUSH W/MAC PVMT 40FT± N C/L IMPERIAL HWY 35FT± W C/L PARAMOUNT BLVD (BELL F 10A RM NO 2 RE2177)	SY 3166A
BASELINE (1955)	104.631	L+T S CB SPRINGER ST 3FT± W OF END OF CB 70FT± W C/L OF PARAMOUNT BLVD	SY 3168A
BASELINE (1955)	106.608	L+T CONC WK FRONT OF BLDG NO 12161 PARAMOUNT BLVD 54FT± W C/L INT PARAMOUNT BLVD + ALAMEDA ST (PRCD)	SY 3170A
BASELINE (1955)	108.682	L+T @ NE COR OF WK OF BLDG NO 12037 PARAMOUNT BLVD 50FT± W C/L PARAMOUNT BLVD	SY 3171A
BASELINE (1955)	108.965	CS MON 13FT± S C/L STEWART + GRAY RD 2FT± W C/L PARAMOUNT BLVD	SY 3172A
BASELINE (1955)	110.474	L+B S CB DEPALMA ST 1FT± W CB RET @ SW COR DEPALMA ST + PARAMOUNT BLVD	SY 3173A
BASELINE (1955)	111.563	L+B N CB CLETA ST 1FT± W CB RET @ NW COR CLETA ST + PARAMOUNT BLVD	SY 3174
BASELINE (1955)	112.372	L+T S CB BROOKMILL RD 2FT± W CB RET @ SW COR BROOKMILL RD + PARAMOUNT BLVD	SY 3175
BASELINE (1955)	116.370	L+T 1ST STEP TO HSE NO 11445 PARAMOUNT BLVD 53FT± W C/L INT PARAMOUNT BLVD + PHLOX ST	SY 3178A
BASELINE (1955)	117.259	L+T W CB PARAMOUNT BLVD 1FT± S CB RET @ SW COR BURNS AVE + PARAMOUNT BLVD	SY 3179A
BASELINE (1955)	116.532	L+T CB RET @ SW COR FIRESTONE BLVD + PARAMOUNT BLVD 9FT± NWLY CB RET	SY 3180
BASELINE (1955)	116.783	L+T CB RET @ NW COR FIRESTONE BLVD + PARAMOUNT BLVD 15FT± NELY CB RET	SY 3181
BASELINE (1955)	116.109	CS MON @ C/L INT 2ND ST + PARAMOUNT BLVD	SY 3182A
BASELINE (1955)	124.200	L+T W CB PARAMOUNT BLVD 2FT± S CB RET SW COR FARM ST + PARAMOUNT BLVD	SY 3183
BASELINE (1955)	124.841	L+T S CB IRWINGROVE DR 1FT± W CB RET @ SW COR IRWINGROVE DR + PARAMOUNT BLVD	SY 3184
BASELINE (1955)	141.622	L+T CONC WALK @ NW COR BLDG NO 12200 TELEGRAPH RD 38FT S C/L TELEGRAPH RD 42FT E C/L NORWALK BLVD 1FT N BLDG + 2FT E OF NW COR BLDG	SY 3276A

QUAD-YEAR	ELEV	DESCRIPTION (INCLUDE QUAD AND YEAR IN DESCRIPTION)	BM NUMBER
NORWALK (1960)	<b>OUT</b> 125.796	CS MON 45FT± S C/L LAKELAND RD 27FT± W C/L NORWALK BLVD	SY 3277
NORWALK (1960)	<b>OUT</b> 127.172	L+T W CB NORWALK BLVD 1FT± S CB RET @ SW COR LAKELAND RD + NORWALK BLVD	SY 3278
NORWALK (1960)	124.614	L+T CTR CB RET @ NW COR ACHILLES ST + NORWALK BLVD	SY 3279
NORWALK (1960)	121.510	L+T W CB NORWALK BLVD 1FT± N CB RET @ NW COR ORACLE ST + NORWALK BLVD	SY 3280
NORWALK (1960)	120.158	L+SPK N CB SHY ST 3FT± W CB RET @ NW COR SHY ST + NORWALK BLVD	SY 3281
NORWALK (1960)	116.205	L+BN W CB NORWALK BLVD 1FT± S CB RET @ SW COR PANTHEON ST + NORWALK BLVD	SY 3282
NORWALK (1960)	113.670	L+BN W CB NORWALK BLVD 3FT± N BCR @ NW COR BEATY ST MKD (BM)	SY 3283A
NORWALK (1960)	112.062	L+BN W CB NORWALK BLVD 1FT± N CB RET @ NW COR ALLARD ST + NORWALK BLVD	SY 3284
NORWALK (1960)	95.262	L+BN S CB IMPERIAL HWY 2FT± W/O CB RET @ SW COR WOODRUFF AVE + IMPERIAL HWY N CB S PKWY	SY 3306
NORWALK (1960)	94.589	L+T S CB IMPERIAL HWY C/L OF CORNUTA AVE PROD FROM THE N (N CB OF PKWY)	SY 3307
NORWALK (1960)	93.688	L+T CTR CB RET @ W END OF S PKWY 30FT± E/O C/L DUNROBIN AVE @ SE COR IMPERIAL HWY + DUNROBIN AVE	SY 3308
NORWALK (1960)	97.356	L+BRASS TACK N CB SERVICE RD S SIDE IMPERIAL HWY 1FT± E/O CB RET @ SE COR VERDURA AVE + IMPERIAL HWY S CB PKWY	SY 3313
NORWALK (1960)	97.411	L+T S CB IMPERIAL HWY 3FT± E/O CB RET @ SE COR BROOKSHIRE AVE + IMPERIAL HWY	SY 3314
NORWALK (1960)	98.845	L+BN S CB SERVICE RD IMPERIAL HWY 2FT± E DRWY HSE NO 8402	SY 3315
BASELINE (1955)	84.041	L+T 1FT± N BCR @ NW COR STUDEBAKER RD + ROSECRANS AVE	SY 3364A
BASELINE (1955)	83.638	L+N NR BACK WK CN SW COR ROSECRANS AVE + STUDEBAKER RD 75FT± S + 48FT± W C/L INT	SY 3365A
BASELINE (1955)	70.831	L+BN W CB PARAMOUNT BLVD 1FT N CB RET @ NW COR JEFFERSON ST + PARAMOUNT BLVD	SY 3628A
BASELINE (1955)	67.869	CS MON 16FT± W C/L PARAMOUNT BLVD 150FT± S C/L MADISON ST MKD (LACS CON SYS TRI STA CLEARWATER E-Z RE 21771938)	SY 3629
BASELINE (1955)	68.353	L+BN IN N CB 1FT± E BCR @ NE COR ALONDRA BLVD + PARAMOUNT BLVD 40FT± N + 48FT± E C/L INT	SY 3630A
NORWALK (1960)	139.636	L+T CONC RET WALL 1FT± FROM N END 50FT± W C/L CARMENITA RD + 236FT± S C/L SUNSHINE AVE	SY 4310
NORWALK (1960)	138.525	L+T CONC DRWY 1FT± N OF S EDGE @ HSE NO 12110 CARMENITA RD 50FT± E C/L + 175FT± S C/L SUNSHINE AVE	SY 4311
NORWALK (1960)	159.007	L+SPK NR SE COR CONC WK 66FT± W CARMENITA RD + 81FT± N C/L BEATY AVE NR SE COR OF BLDG	SY 4312

QUAD-YEAR	ELEV	DESCRIPTION (INCLUDE QUAD AND YEAR IN DESCRIPTION)	BM NUMBER
NORWALK (1960)	161.354	L+BN @ W END GAS ISLAND 55FT± E C/L CARMENITA RD + 145FT± S C/L MEYER RD	SY 4313
NORWALK (1960)	167.077	L+BN IN S CB LAKELAND RD 1FT± W BCR 32FT± S + 75FT± W C/L INT LAKELAND RD + CARMENITA RD	SY 4314B
NORWALK (1960)	169.010	L+BR NR S EDGE CONC DRWY HSE NO 10938 CARMENITA RD 153FT± N C/L LAKELAND AVE + 60FT± E C/L CARMENITA RD	SY 4315
NORWALK (1960)	<b>OUT</b> 169.273	L+SPK CTR CONC WK TO HSE @ SE COR CARMENITA RD + FLORENCE AVE 57FT± S + 45FT± E C/L INT	SY 4316
NORWALK (1960)	169.109	L+T NR S EDGE OF CONC DRWY HSE NO 10762 CARMENITA RD 127FT± N C/L FLORENCE AVE + 57FT± E C/L CARMENITA RD	SY 4317
NORWALK (1960)	97.327	L+BRAD N CB SERVICE RD 1FT± W BCR @ SW COR IMPERIAL HWY + VERDURA AVE 52FT± S/O + 40FT± W/O C/L INT	SY 6101
NORWALK (1960)	95.120	L+BN S RET OF SW COR LAKEWOOD BLVD + IMPERIAL HWY 44FT± S/O + 57FT± W C/L INT	SY 6102
NORWALK (1960)	95.235	L+T 1FT± S/O BCR @ NW COR IMPERIAL HWY + LAKEWOOD BLVD 49FT± N/O + 40FT± W/O C/L INT	SY 6103
NORWALK (1960)	94.445	L+T IN RET NW COR IMPERIAL HWY + CLARK AVE 43FT± N/O + 45FT± W/O C/L INT	SY 6104
NORWALK (1960)	94.260	RDBM TAG S CB 5FT± W/O BCR @ SE COR IMPERIAL HWY + CLARK AVE 40FT± S/O + 55FT± E/O C/L INT	SY 6105
NORWALK (1960)	92.349	L+T S CB 5FT± E/O BCR @ SW COR IMPERIAL HWY + ARDIS AVE 40FT± S/O + 40FT± W/O C/L INT	SY 6106
NORWALK (1960)	92.625	RDBM TAG S CB 1FT± E/O BCR @ SE COR IMPERIAL HWY + ARDIS AVE 40FT± S/O + 45FT± E/O C/L INT	SY 6107
NORWALK (1960)	93.825	L+BN S CB 3FT± W/O BCR @ SW COR IMPERIAL HWY + BELLFLOWER BLVD 40FT± S/O + 62FT± W/O CL INT	SY 6108
NORWALK (1960)	93.958	RAM SET N CB 1FT± W/O BCR @ NW COR IMPERIAL HWY + BELLFLOWER BLVD 40FT± N/O + 61FT W/O CL INT	SY 6109
NORWALK (1960)	100.333	L+T CONC APRON 1FT± FROM W EDGE @ GARAGE BLDG NO 13219 IMPERIAL HWY 70FT± N C/L 1100FT± E LEFFINGWELL RD MKD (BM)	SY 6122
NORWALK (1960)	96.103	RDBM TAG S CB 3FT± E BCR @ SE IMPERIAL HWY + CARMENITA 40FT± S + 77FT± E C/L INT	SY 6123
NORWALK (1960)	97.014	RDBM TAG N CB 40FT± E BCR @ NE COR IMPERIAL HWY + CARMENITA AVE 40FT± N + 115FT E C/L INT	SY 6124
NORWALK (1960)	99.829	L+BN CONC BASE OF W GATE POST TO PUMP STATION 50FT± N C/L IMPERIAL HWY 260FT± E BRIDGE B816 0.2MI± E CARMENITA RD	SY 6125
NORWALK (1960)	108.480	L+BN N CB IMPERIAL HWY @ W END BRIDGE B1267 42FT± N C/L + 125FT± W C/L MARQUARDT AVE	SY 6126
NORWALK (1960)	108.468	L+T W CB MARQUARDT AVE 12FT± N BCR 64FT± S + 33FT± W C/L INT IMPERIAL HWY MKD (BM)	SY 6127
NORWALK (1960)	113.340	L+T S CB IMPERIAL HWY 42FT± E BCR 42FT± S + 107FT± E C/L INT EDWARD RD MKD (BM)	SY 6128
NORWALK (1960)	165.763	RDBM TAG 16IN S OF N EDGE CONC DRWY TO HSE NO 11407 CARMENITA RD 57FT± W C/L CARMENITA RD	SY 6129



JUL 1964

LOS ANGELES COUNTY ROAD DEPARTMENT  
 SURVEY SECTION FIELD ENGINEERING DIVISION

PAGE 19

QUAD-YEAR	ELEV	D E S C R I P T I O N (INCLUDE QUAD AND YEAR IN DESCRIPTION)	BM NUMBER
NORWALK (1960)	165.043	RDBM TAG E CB OF CARMENITA RD 32FT± E /F C/L CARMENITA RD 7FT± N OF DRWY OF HSE NO 11320 CARMENITA RD	SY 6130
NORWALK (1960)	164.111	RDBM TAG W CB <b>OUT</b> CARMENITA RD 40FT± W C/L @ OR NR S PL OF HSE NO 10627 CARMENITA RD OPP TP W-4885Y	SY 6131
NORWALK (1960)	163.884	RDBM TAG W CB OF CARMENITA RD 40FT± W C/L CARMENITA RD @ OR NR S PL OF HSE NO 10615 CARMENITA RD OPP TP W-4623Y	SY 6132
NORWALK (1960)	86.139	L+T N CB ROSECRANS AVE 40FT± N C/L @ OR NEAR C/L PROD CASTANA AVE	SY 6133
NORWALK (1960)	85.686	L+T N CB ROSECRANS AVE 42FT± N C/L + 34FT± W C/L CASTANA AVE	SY 6134
NORWALK (1960)	77.890	RD MON IN WELL @ C/L INT DOWNEY AVE + ROSECRANS AVE	SY 6135
NORWALK (1960)	78.416	RD HD SPK W CB 5FT± S BCR @ SW COR ROSECRANS AVE + DOWNEY AVE 87FT± S + 20FT± W C/L INT MKD(XM98)	SY 6136
NORWALK (1960)	75.231	RD HD SPK S CB ROSECRANS AVE 40FT± S C/L + 24FT± E C/L PROD ANDERSON ST MKD (XA 111)	SY 6137
NORWALK (1960)	74.962	RD MON IN WELL 8IN DN @ OR NEAR C/L INT ROSECRANS AVE + ANDERSON ST MKD (LA CO RD DEPT 1953)	SY 6138
NORWALK (1960)	104.986	L+BN CONC BASE OF 6FT CHAIN LINK FENCE 50FT± N C/L IMPERIAL HWY OPP PP NO 1120260E	SY 6139
NORWALK (1960)	103.604	L+BN N CB IMPERIAL HWY 1FT± E BCR @ NE COR VOLUNTEER AVE	SY 6140
NORWALK (1960)	105.807	L+BN CONC BASE CHAIN LINK FENCE 50FT± N C/L IMPERIAL HWY OPP PP NO 112021 E 670FT± W C/L BLOOMFIELD AVE	SY 6141
NORWALK (1960)	112.541	L+BN CONC CB OF LIQUOR STORE 400FT± E BLOOMFIELD AVE 55FT± N C/L IMPERIAL HWY MKD (BM)	SY 6142
NORWALK (1960)	115.666	L+BN CONC BASE OF SWITCH SIGNAL STAND 15FT± W OF W TRACK 65FT± N C/L IMPERIAL HWY MKD (BM)	SY 6143
NORWALK (1960)	116.268	L+BN CONC BASE OF 6FT CHAIN LINK FENCE @ COR 50FT± N C/L IMPERIAL HWY 400FT± E OF RR TRACK (88+80) MKD (BM)	SY 6144
NORWALK (1960)	125.919	L+T W EDGE CONC WK TO BLDG NO 12935 IMPERIAL HWY 55FT± N C/L +320FT± W C/L SHOEMAKER AVE	SY 6145